

Kelly Stackable Chair

by Claesson Koivisto Rune for Tacchini



Kelly Stackable Chair

by Claesson Koivisto Rune for Tacchini

Lead Time
6 - 8 weeks

Certifications
ISO14001

Stackability
Up to 2 units

Warranty
3 years structural

Maintenance
Please refer to the Stylecraft Care & Maintenance Guide on product listing



Drawing inspiration from the beauty of a minimalist aesthetic, the Kelly stackable chair features a rounded yet linear form. The Kelly stackable chair is suitable for dining applications in residential, hospitality or contract environments.

Kelly is upholstered in fabric or leather and sits atop a 4 leg mild steel frame, finished to house powdercoat colour, matt champagne gold chrome or brush matt copper chrome. The Kelly chair is stackable up to 2 units.

The Kelly stackable chair with black powdercoat frame is a stocked item however please allow 6 - 8 weeks for upholstery. If out of stock, or an alternative frame finish is preferred, the lead time may be up to 14 weeks.

Dimensions

Kelly Stackable Chair
820mm(h) x 560mm(w) x 530mm(d)

Seat Height
470mm(h)

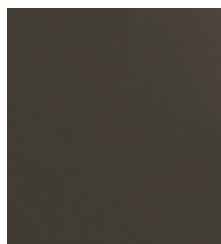
Finishes & Materials Guide

Kelly Stackable Chair by Tacchini

Base
Single Colour
Powdercoat



Grey
T04 · RAL 7022



Concrete Grey
T05 · RAL 7023



Metal Grey
T93



Polished Chrome
T23



Matte Black Chrome
T27